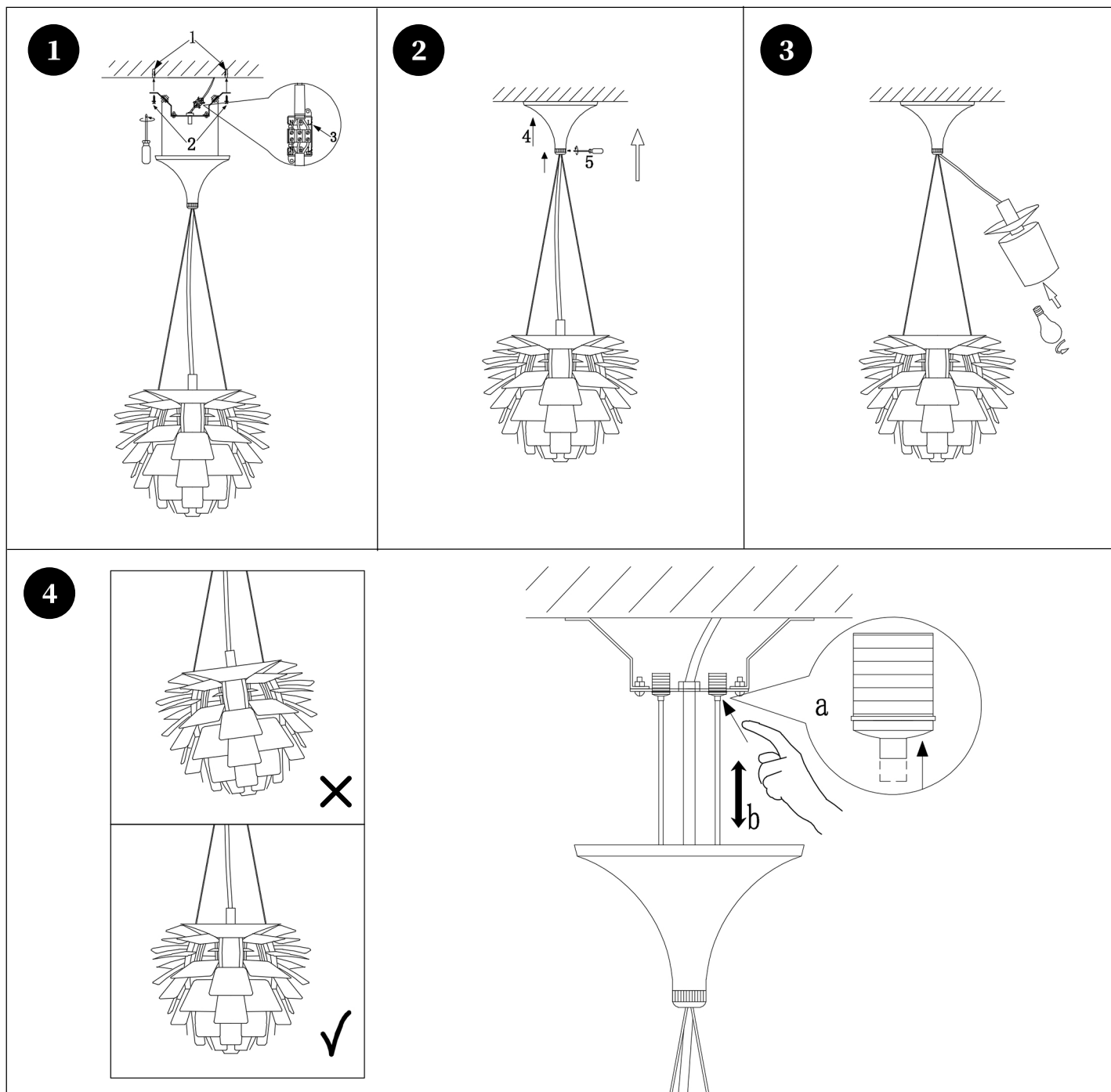


INSTALLATION GUIDE - WM2094



- 1. Fix the mounting bracket on the ceiling box with screws, and use the wire connector to connect the wires of the light to the reserved wires according to labels on the wires.**
- 2. Align the canopy screw hole with the mounting bracket and secure the canopy with screws.**
- 3. Screw the provided bulb up into the socket and do the socket down into the lampshade as well.**
- 4. Turn the power back on and flip on the light switch to test your light.**