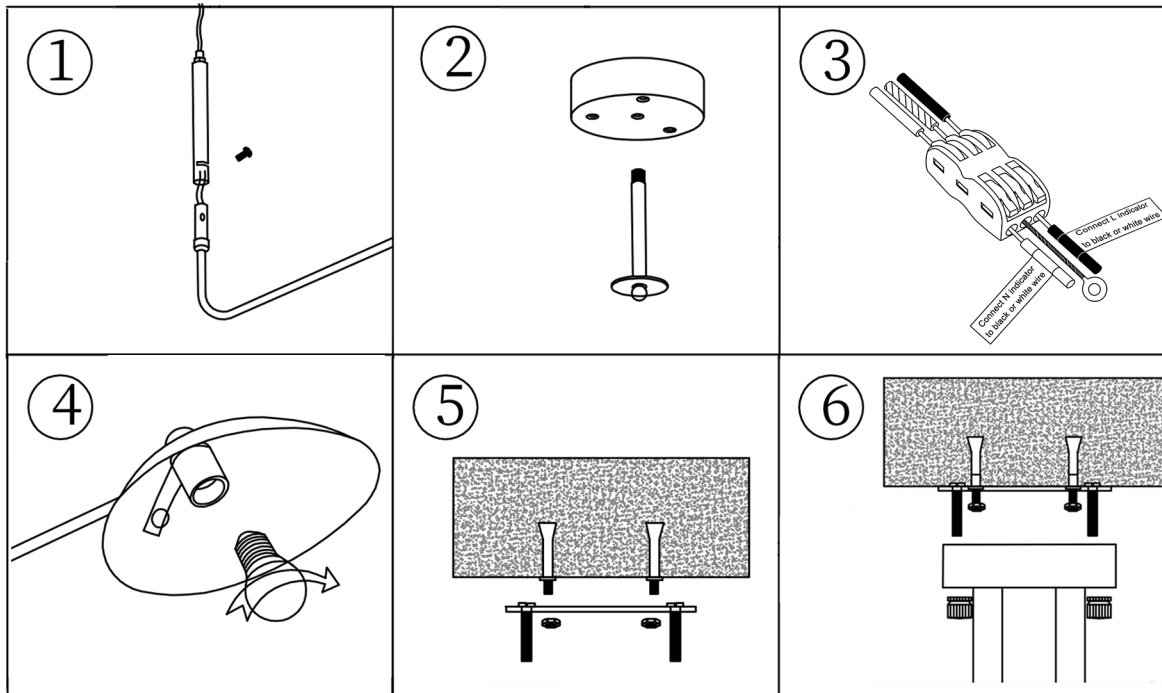
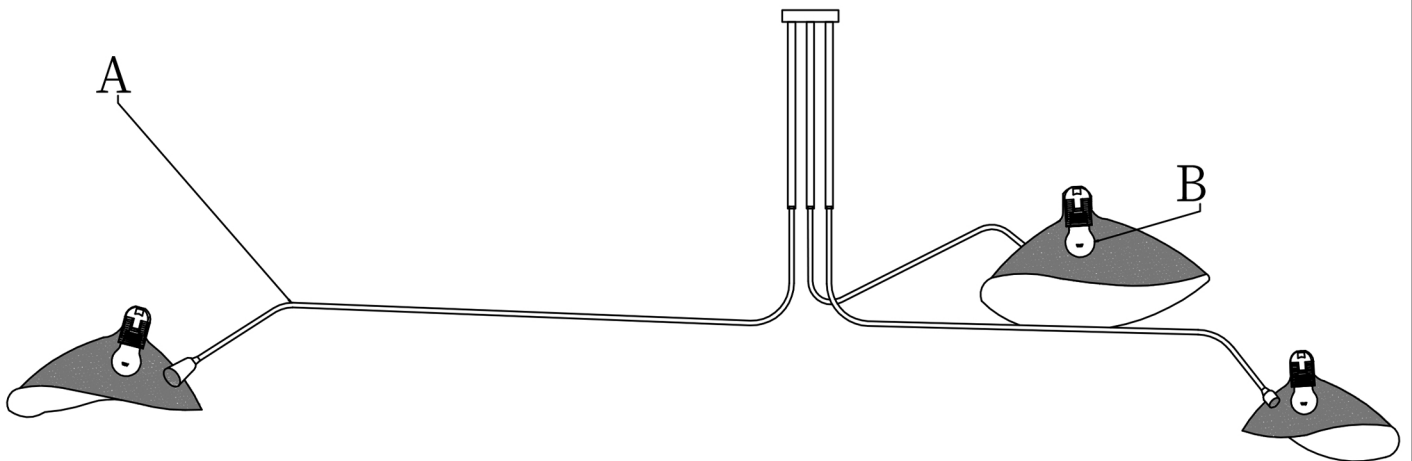
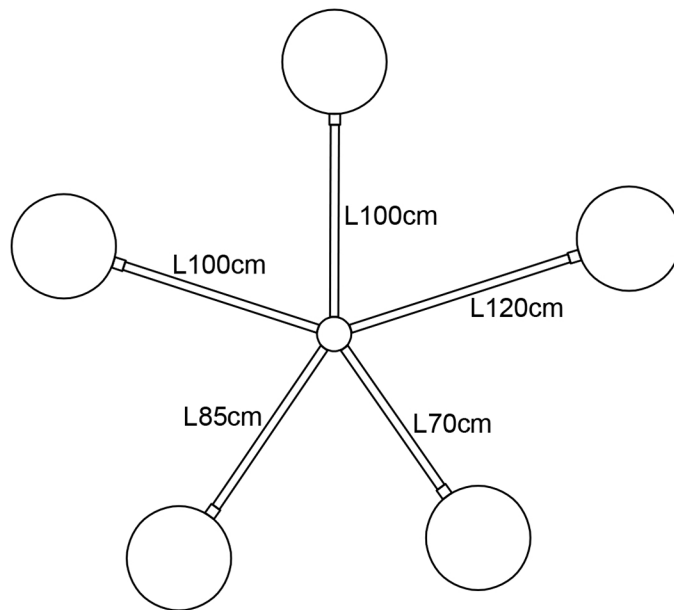
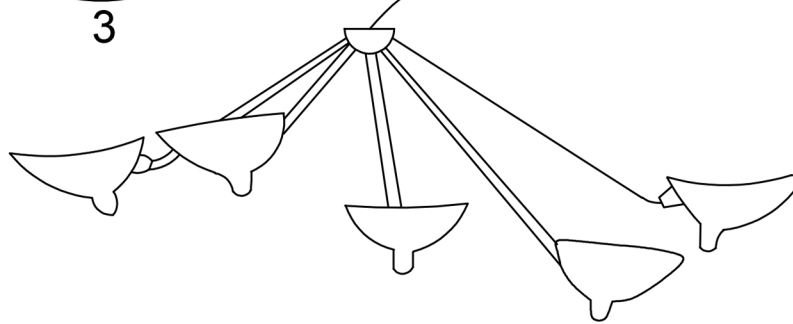
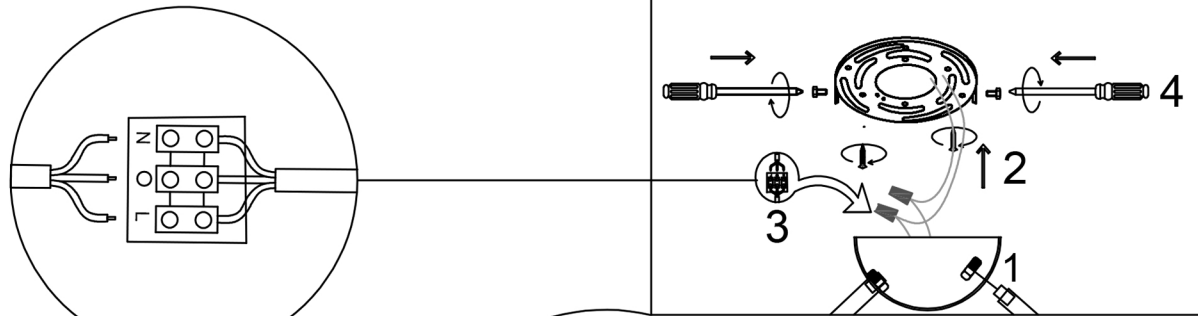


INSTALLATION GUIDE - WM2057



1. Take the screw off the arm and attach the rod to arm with screw.
2. Attach the arms to a canopy with nuts.
3. Use the wire connector to connect the wires of arms to the supply wires according to labels on the wires.
4. Screw bulbs up.
5. Drill the mounting bracket into the ceiling with screws and even anchors (these come with the light).
6. Align holes at the side of the canopy with the mounting bracket and secure the canopy with screws.
7. Turn the power back on and flip on the light switch to test your light.

INSTALLATION GUIDE - WM2057



- 1. Attach arms to a canopy with nuts.**
- 2. Attach the mounting bracket to ceiling box with screws.**
- 3. Use the wire connector to connect the wires of arms to the supply wires according to labels on the wires.**
- 4. Align holes at the side of the canopy with the mounting bracket and secure the canopy with screws.**
- 5. Turn the power back on and flip on the light switch to test your light.**